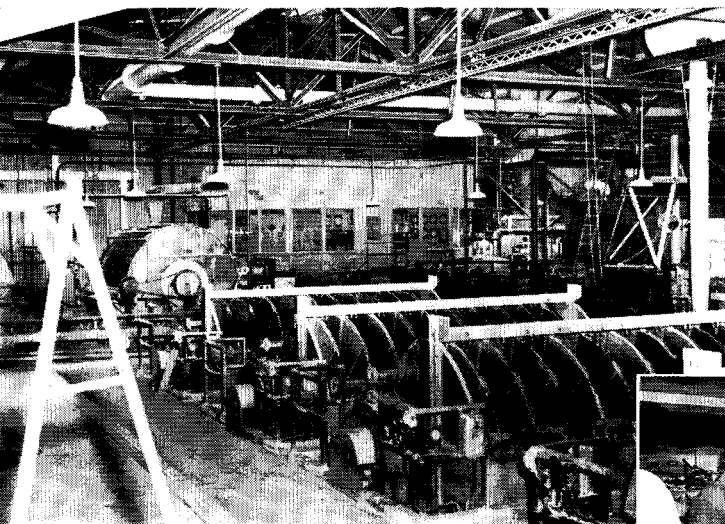




\$15 million Bonnie plant at Bartow, Fla., producing animal feed supplement and plant food products. First plant in Florida for full scale recovery of uranium from phosphate rock

## More Phosphate for Feed Supplements

Use of phosphate supplements in animal and poultry feeds has jumped from 352,000 tons (bone meal equivalent, 13% P) in 1947 to 600,000 in 1953. Informed sources estimate sales will be 850,000 tons in 1960. International Minerals and Chemical Corp. expects to get a good share of this market. To kick off its drive the company recently invited editors and company executives to inspect its new plant which is now coming into efficient operation. Big job now is to merchandize these potential supplies of high grade dicalcium phosphate. Stressing quality and high nutritional availability of product (trade-named 20/FOS because phosphorus content is 20%) company is embarking on educational and promotional program to reach formulators and buyers in feed industry



Series of Eimco rubber lined disk filters with polyethylene filter cloth separate gypsum from phosphoric acid. Modern plant processes are controlled with extensive automatic instrumentation costing over \$250,000. Instrument panels in background are housed in special air-conditioned room



Flow chart of Bonnie operations. Construction has now started on additional units to produce triple superphosphate by mid-summer

